



Smithsonian Libraries

National Museum of American History Library
12th Street & Constitution Avenue, NW
Room 5016, MRC 630
Washington, DC 20013-7012

<http://library.si.edu/libraries/national-museum-american-history-library>

Trade Literature at the Smithsonian Libraries:

General copyright notice:

The copyright law of the United States (Title 17, United States Code) governs the making of photocopies or other reproductions of copyrighted materials. Under certain conditions specified in the law, libraries and archives are authorized to furnish a photocopy or other reproduction. One of these specified conditions is that the photocopy reproduction is not to be “used for any purpose other than private study, scholarship or research.” If a user makes a request for, or later uses, a photocopy or reproduction for purposes in excess of “fair use,” that user may be liable for copyright infringement. This institution reserves the right to refuse a patron the right to make photocopies if, in its judgment, fulfillment of the order would involve violation of copyright law.

Citation and publication:

The National Museum of American History Library’s Trade Literature Collection is an exceptionally valuable resource for historical research on American business, technology, marketing, consumption, and design. The collection contains more than 500,000 catalogs, technical manuals, advertising brochures, price lists, company histories and related materials representing more than 30,000 companies, primarily covering the years 1880-1945.

When citing materials found in the Trade Literature Collection, please include:

[Specific company name, i.e. Eastman Kodak Company], Trade Literature Collection,
National Museum of American History Library, Smithsonian Libraries, Washington D.C.
[date consulted]

If you intend to use images or materials from the Trade Literature Collection for publication, permission from the Smithsonian Libraries is required. Please contact SILimages@si.edu. Note that if work is protected by copyright, permission from copyright holder may also be required.

GENERAL ELECTRIC

GENERAL ELECTRIC COMPANY, SCHENECTADY, N. Y., SALES OFFICES IN PRINCIPAL CITIES

August, 1928



* GEF-1309

PARTS OF TYPE K-35 CONTROLLERS FORMS LR, S2, DD, EE, FF, GG, GR2, HH AND LL

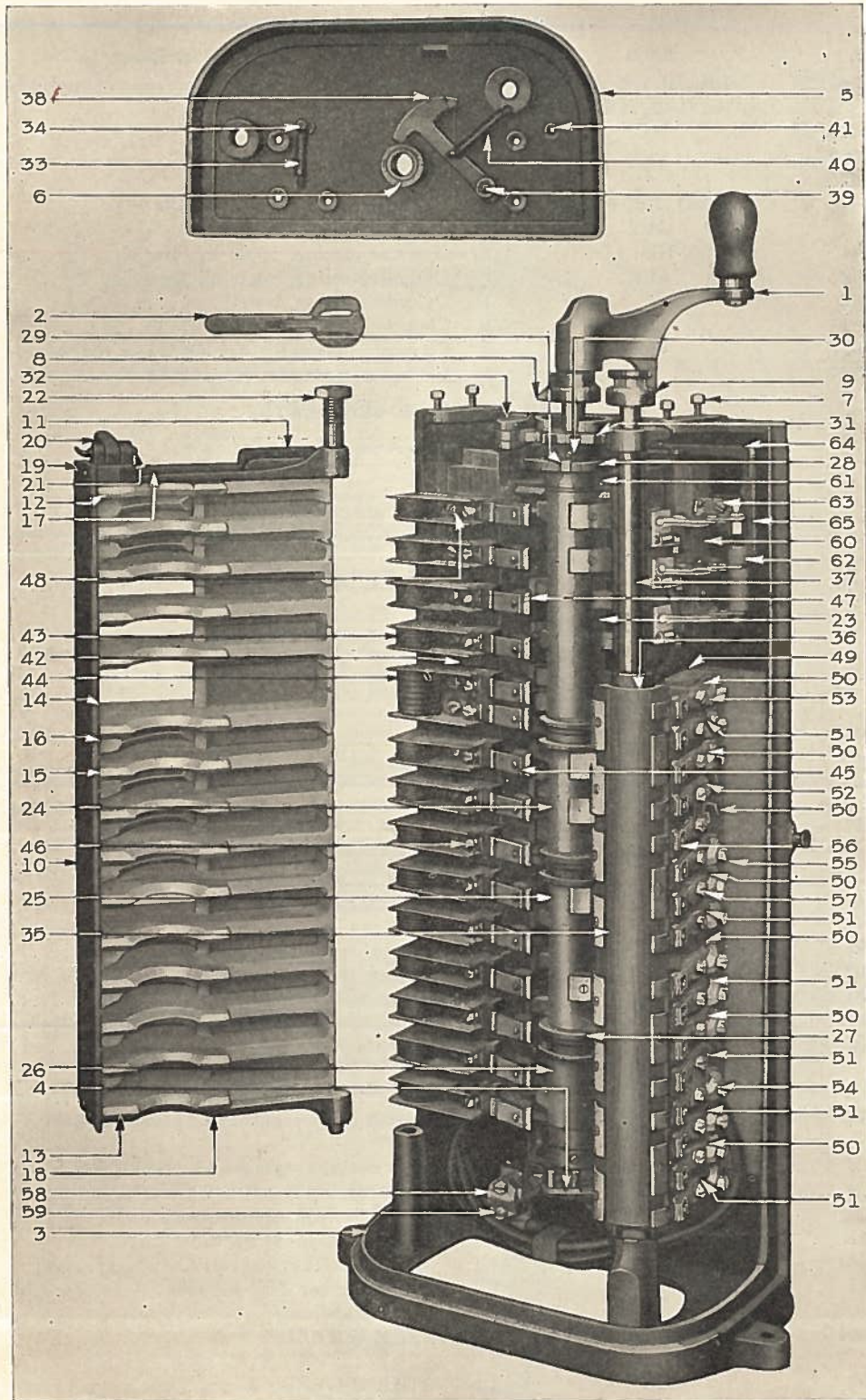
Ref. No.	Cat. No.	Form	No. Required	Description
1	141687	ALL	1	MAIN HANDLE, malleable iron, with locking wedge. . . .
2	189499	"	1	REVERSE HANDLE.
3	2617992G1	LR, S2, DD, EE, FF, GR2, HH	1	FRAME with bearing cap, bushings, terminal clamp and cap screws.
3	2617992G2	GG	1	FRAME with bearing cap, bushings, terminal clamp and cap screws.
3	2611028G3	LL	1	FRAME with bearing cap, bushings, terminal clamp and cap screws.
4	224184	ALL	1	Bearing cap for main cylinder shaft, with dowel, pivot and stop pins.
	151848	"	2	Cap screw fastening bearing cap to frame ($\frac{3}{8}$ in.-16, $1\frac{1}{2}$ in. hex. h. slot. sherardized).
	1434927	"	1	Bushing for main cylinder shaft bearing.
	1434942	LL	1	Bushing for reverse cylinder shaft bearing.
	406014	"	1	Set screw for bushing.
	1468360	ALL	1	Oil pipe for main cylinder shaft.
5	1153397G7	LR, S2, DD, EE, FF, GG, GR2, HH	1	CAP PLATE with spring posts, pivot pin, oil cup and bushing for main cylinder shaft bearing.
5	1153397G6	LL	1	CAP PLATE with spring posts, pivot pin, oil cup and bushings for main and reverse cylinder shaft bearings.
6	112024	ALL	1	Bushing for cap plate and main cylinder shaft bearing. . . .
	30520	"	1	Set screw for bushing ($\frac{1}{8}$ in.-18, $\frac{1}{16}$ in. headless, pointed, sherardized, sp'l).
	256786	LL	1	Bushing for cap plate and reverse cylinder shaft bearing. . . .
	2X257	ALL	1	Oil cup for main cylinder check pawl.
7	133717	"	4	Cap screw fastening cap plate to frame ($\frac{3}{8}$ in.-16, $\frac{3}{4}$ in. hex. h. sherardized).
8	2X97	"	1	Water cap and pointer for main cylinder shaft, with set screw.
9	127065	"	1	Water cap for reverse cylinder shaft, with set screw.
	14410	"	2	Set screw for water cap ($\frac{5}{16}$ in.-18, $\frac{5}{8}$ in. headless, sherardized, sp'l).
	112026	LR, S2, EE, FF, GG, GR2, HH, LL	1	Wooden cover.
	1972366G1	DD	1	Wooden cover.
	435529	ALL	1	Catch for cover, right-hand.
	432843	"	1	Catch for cover, left-hand.
	112029	"	2	Stud for catch ($\frac{3}{8}$ in.-16, $1\frac{1}{4}$ in.).
	2402352	"	2	Thumb nut for stud ($\frac{3}{8}$ in.-16, tap).
	143974	"	2	Washer for stud ($\frac{1}{4}$ in. by $\frac{1}{2}$ in. by 0.0625 in. sherardized).
	234391	"	1	ARC DEFLECTOR with arc suppressor plates.
10	1432656	"	1	Wide side strip for arc deflector.
11	110081	"	1	Narrow strip for back of arc deflector.

NOTE.—Data subject to change without notice.

*Supersedes Bulletins No. 54689.1A, 54680.1, 54682.1 and Eng. Adv. 864-L and 864-M.

GEF-1309 Parts of Type K-35 Controllers

Ref. No.	Cat. No.	Form	No. Required	Description
12	110082	ALL	1	Upper end arcing plate for arc deflector
13	110083	"	1	Lower end arcing plate for arc deflector
14	110084	"	1	Wide arcing plate for arc deflector
15	110085	"	12	Narrow arcing plate for arc deflector, except end plates
16	1432627	"	10	ARC SUPPRESSOR PLATE
	121834	"	50	Screw fastening wide strip to arcing plate or arc suppressor plate (No. 10, 7/8 in. f.h. sherardized)
	19892	"	30	Screw fastening narrow strip to arcing plate (No. 10, 1 1/4 in. r.h. blued)
17	224186	"	1	Upper hinge bracket
18	224187	"	1	Lower hinge bracket with hinge pin
19	145670	"	4	Screw fastening wide strip to hinge bracket (5/8 in.-18, 7/8 in. r.h. sherardized)
	143510	"	4	Screw fastening narrow strip to hinge bracket (1/8 in.-18, 5/8 in. r.h. sherardized)
20	112033	"	1	Latch for arc deflector
21	112034	"	1	Hinge pin for latch (3/8 in. by 2 in.)
	110774	"	2	Spring cotter for hinge pin (3/8 in. by 5/8 in. sherardized)
	112035	"	1	Compression spring for latch
	224188	"	1	Insulation shield between upper hinge bracket and arcing plate
	112036	"	1	Insulation shield between lower hinge bracket and arcing plate
	189130	"	4	Screw fastening No. 224188 or 112036 to hinge bracket (10-30, 3/8 in. f.h. sherardized)
22	442134	"	1	Hinge bolt for arc deflector
	234392	LR, DD, GG, GR2	1	MAIN CYLINDER with shaft, insulation disks, collar, star wheel and contact segments
	259898	S2, LL	1	MAIN CYLINDER with shaft, insulation disks, collar, star wheel and contact segments
	16X679	EE	1	MAIN CYLINDER with shaft, insulation disks, collar, star wheel and contact segments
	245790	FF	1	MAIN CYLINDER with shaft, insulation disks, collar, star wheel and contact segments
	1886842G4	HH	1	MAIN CYLINDER with shaft, insulation disks, collar, star wheel and contact segments
	171784	ALL	1	Set of main cylinder copper contact segments with burning tips and screws
	1495264	"	1	Contact segment
	2440216	"	1	Contact segment
	1495259	"	1	Contact segment
	1495261	"	1	Contact segment
	1495262	"	1	Contact segment
	1495265	"	2	Contact segment
	2440990	"	2	Contact segment, with up-set ear
	2440219	"	2	Contact segment
	2440223	"	2	Contact segment
	2440217	"	3	Contact segment
	2440218	"	6	Contact segment
	1464827	"	16	Burning tip
	400037	"	42	Segment screw
For illustrations of contact segments see pages 4 and 5:				
A number of Type K-35 controllers have been furnished with segments with dowel pins. For convenience in ordering this segment or dowel pin, they are listed below.				
	2440222	ALL	2	Contact segment, drilled for dowel pin
	405786	"	2	Dowel pin

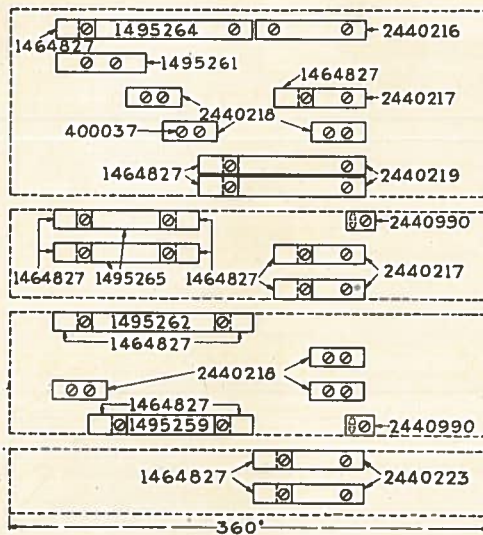


TYPE K-35 FORM GR2 CONTROLLER

GEF-1309 Parts of Type K-35 Controllers

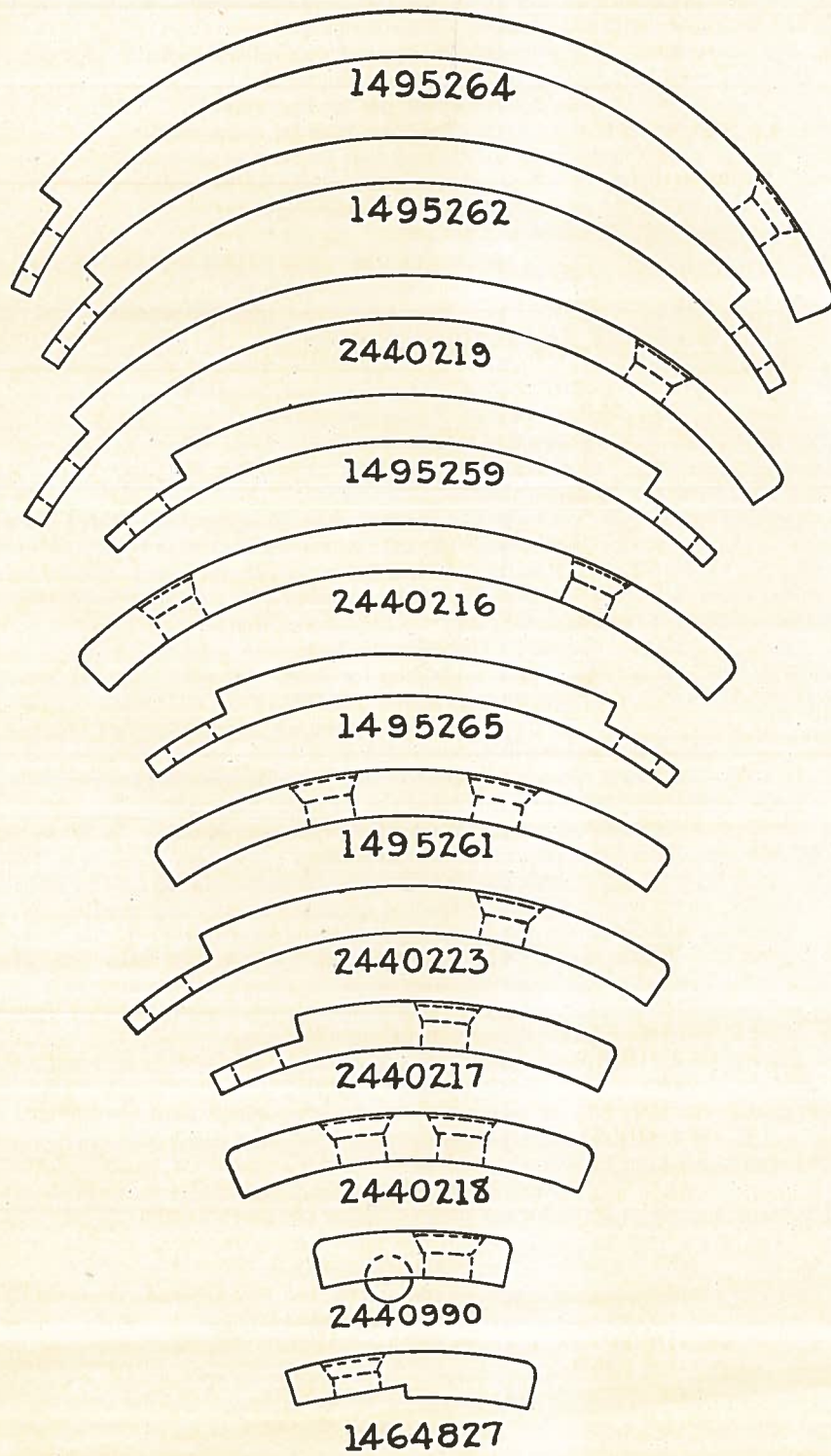
Ref. No.	Cat. No.	Form	No. Required	Description
	1886842P24	LR, S2, DD, EE, GG, GR2, HH, LL	1	Insulated hexagonal shaft.....
	1886842P25	FF	1	Insulated hexagonal shaft.....
	2431526	ALL	1	Insulation for shaft.....
23	151123	"	1	Cylinder casting, upper.....
23	206531	LR, DD, EE, FF, GG, GR2	1	Cylinder casting, upper middle.....
24	151124	S2, HH, LL	1	Cylinder casting, upper middle.....
25	112052	ALL	1	Cylinder casting, lower middle.....
26	112053	"	1	Cylinder casting, lower.....
	463701	"	1	Clamping spring for No. 151123.....
	1457627	"	1	Clamping spring for No. 206531 or 151124.....
	1457614	"	1	Clamping spring for No. 112052.....

MAIN CYLINDER SEGMENTS



	435385	ALL	1.	Clamping spring for No. 112053.....
	169302	"	8	Set screw for clamping spring ($\frac{3}{8}$ in.-16, $\frac{1}{8}$ in. sq. h. st'd)
27	422681	"	6	Spacing disk between cylinder castings.....
	16D347	"	8	Felt washer between spacing disk and cylinder castings.....
28	1886842P15	LR, S2, DD, FF, GG, GR2, HH, LL	1	Insulation disk.....
28	206302	EE	1	Insulation disk.....
29	12D354	LR, S2, DD, FF, GG, GR2, HH, LL	1	Copper contact segment for ground finger.....
29	206305	EE	1	Copper contact segment for ground finger.....
30	180235	ALL	1	Screw fastening No. 12D354 or 206305 to star wheel (10-30, $\frac{1}{2}$ in. f.h. sherardized).....
	422515	"	1	Insulation collar ($\frac{3}{4}$ in. wide).....
	1485684	"	1	Steel collar (1 in. wide).....
	199097	"	1	Set screw for No. 1485684 ($\frac{1}{16}$ in.-14, $1\frac{1}{2}$ in. headless, sherardized).....
31	821020P7	LR, DD, FF, GG, GR2, HH	1	STAR WHEEL.....
31	206303	EE	1	STAR WHEEL.....
31	151183	S2, LL	1	STAR WHEEL.....

MAIN CYLINDER SEGMENTS
(Actual Size)



GENERAL ELECTRIC COMPANY

GEF-1309 Parts of Type K-35 Controllers

Ref. No.	Cat. No.	Form	No. Required	Description
	444946	ALL	1	Pin fastening star wheel to shaft ($\frac{5}{16}$ in. by 2 in.).....
	2X257	"	1	Oiler for shaft.....
32	112060	"	1	Check pawl with roller, for main cylinder.....
	19739	"	1	Roller with pin.....
	112061	"	1	Pivot pin for check pawl.....
33	2412128	"	1	Tension spring for check pawl.....
34	112062	"	1	Spring post for tension spring.....
	2190653G3	LR, S2, DD, EE, GG, GR2, HH, LL	1	REVERSE CYLINDER with shaft, collar, star wheel and contact segments.....
	171765	FF	1	REVERSE CYLINDER with shaft, collar, star wheel and contact segments.....
	16X667	ALL	1	Set of reverse cylinder copper contact segments with screws.....
	12D487	"	12	Small contact segment with up-set ears.....
	66903	"	4	Large contact segment.....
	1405021	"	24	Segment screw.....
NOTE.—The K-35 Controller was formerly equipped with a medium, three-screw segment in the forward position and a small two-screw segment in the reverse position. For the convenience of customers desiring to order these segments, they are listed below.				
	1493589	ALL	8	Medium contact segment with three screw holes.....
	1493584	"	4	Small contact segment with two screw holes.....
	112072	"	1	Fiber filler strip between copper contact segments.....
	121840	"	2	Screw fastening filler strip to cylinder body (No. 8, $\frac{5}{8}$ in. f.h. sherardized).....
	256787	"	1	Cylinder body with pins.....
35	129913	"	1	Collar for shaft, with pin.....
36	112070	"	1	STAR WHEEL.....
37	151104	"	1	Fiber insulation sleeve for shaft (1 in. by $1\frac{1}{8}$ in. by 9 in.).....
38	112063	"	1	Interlocking pawl for main and reverse cylinders.....
39	112064	"	1	Pivot pin for interlocking pawl.....
	161261	"	1	Washer for pivot pin ($\frac{13}{16}$ in. by $\frac{1}{8}$ in. by 0.0625 in. sherardized).....
	110774	"	1	Spring cotter for pivot pin ($\frac{3}{8}$ in. by $\frac{5}{8}$ in. sherardized).....
40	13632	"	1	Tension spring for interlocking pawl.....
41	112062	"	1	Spring post for tension spring.....
	234396	"	1	INSULATION TROUGH for main cylinder.....
	112074	"	1	Side plate for trough, left-hand.....
	112075	"	1	Side plate for trough, right-hand.....
	1432649	"	1	Back plate for trough.....
	171768	"	4	Arcing plate.....
	194951	"	16	Screw fastening side or back plate to arcing plate (10-30, $\frac{5}{8}$ in. f.h. sherardized).....
	256789	LR, S2, DD, FF, GG, GR2, HH, LL	1	Main finger block with finger bases without fingers.....
	16X668	EE	1	Main finger block with finger bases without fingers.....
42	2190650P2	LR, S2, DD, FF GG, GR2, HH, LL	1	Main finger block.....
42	2190650P13	EE	1	Main finger block.....
43	2670480G1	ALL	13	Blowout coil with pole pieces, terminal block and finger base for one finger.....
44	2670481G1	"	1	Blowout coil with pole pieces, terminal block and finger base for two fingers.....
	153984	"	58	Screw fastening finger base or terminal block to finger block (No. 10, 1 $\frac{1}{4}$ in. f.h. sherardized).....

GENERAL ELECTRIC COMPANY

Parts of Type K-35 Controllers GEF-1309

Ref. No.	Cat. No.	Form	No. Required	Description
	1452072	ALL	1	Copper connection strip for two coils
	256790		2	Cable connector with terminals for two coils
	1452079	"	9	Small offset terminal for blowout coil
	1452089	"	1	Large offset terminal for blowout coil
	1452092	"	1	Straight terminal for blowout coil
	17376	"	15	Cap screw fastening terminal or connection strip to terminal block ($\frac{1}{8}$ in.-18, $\frac{3}{4}$ in. hex. h. slot. sherardized)
	498560	"	15	Washer for No. 17376 ($\frac{3}{16}$ in. by $\frac{5}{8}$ in. by 0.0265 in. sherardized)
	154196	"	15	Spring lock washer for No. 17376 ($\frac{3}{16}$ in. by $\frac{3}{4}$ in. by $\frac{5}{16}$ in. thick)
45	1405080	LR, S2, DD, EE GG, GR2, HH, LL	15	MAIN CONTACT FINGER
45	151107	FF	15	MAIN CONTACT FINGER
	151108	"	15	Contact tip for No. 151107
	112305	"	15	Cap screw fastening tip to finger (14-24, $\frac{1}{2}$ in. hex. h. slot. sherardized)
	154194	"	15	Spring lock washer for No. 112305 ($\frac{1}{4}$ in. by $\frac{3}{4}$ in. by $\frac{5}{16}$ in. thick)
	151109	"	15	Guard for No. 112305
46	126905	ALL	15	Adjusting screw for main contact finger (14-24, $\frac{5}{8}$ in. hex. h. slot. sherardized cap screw)
47	1407209	"	15	Locking spring for No. 126905
	713353	"	15	MAIN CONTACT FINGER, self-aligning with removable tip (Interchangeable with No. 1405080)
	13D424	"	15	Contact tip for No. 713353
	150479	"	15	Nut for No. 13D424 (14-24, hex. std. sherardized)
	154194	"	15	Spring lock washer for No. 150479 ($\frac{1}{4}$ in. by $\frac{3}{4}$ in. by $\frac{5}{16}$ in. thick)
	713333	"	15	Contact finger for No. 713353
	713336	"	15	Shunt for contact finger
	12D900	"	15	Adjusting screw for No. 713353
	11D688	"	15	Lock nut for No. 12D900
	154196	"	15	Spring lock washer for No. 11D688 ($\frac{3}{16}$ in. by $\frac{3}{4}$ in. by $\frac{5}{16}$ in. thick)
	713332	"	15	Seat for contact finger
	729413	"	15	Compression spring for contact finger
	713327	"	15	Support for contact finger
48	126872	"	15	Cap screw fastening main contact finger to base ($\frac{1}{8}$ in.-18, $\frac{5}{8}$ in. hex. h. slot. sherardized)
	414842	"	15	Washer for No. 126872 ($\frac{3}{16}$ in. by $\frac{5}{8}$ in. by 0.060 in. brass)
	206304	EE	1	Auxiliary finger block with finger bases and fingers
	206291	"	1	Finger block
	1400404	"	1	Short finger base
	206292	"	1	Long finger base and support
	153979	"	2	Screw fastening No. 1400404 to block (No. 8, $\frac{3}{4}$ in. f.h. sherardized)
	127347	"	2	Screw fastening No. 206292 to block (No. 10, $\frac{3}{4}$ in. f.h. sherardized)
	1404009	"	2	Auxiliary contact finger
	175561	"	4	Screw fastening contact finger to base (10-30, $\frac{1}{2}$ in. r.h. sherardized)
	206293	"	2	Double washer for No. 175561
	417591	"	2	Copper terminal for contact finger

GENERAL ELECTRIC COMPANY

GEF-1309 Parts of Type K-35 Controllers

	148915	ALL	5	Screw fastening finger block to frame ($\frac{1}{8}$ in.—18, 2 in. r.h. sherardized).....
	498560	"	5	Washer for No. 148915 ($\frac{3}{4}$ in. by $\frac{5}{8}$ in. by 0.0625 in. sherardized).....
	1459208	FF	1	Ground connection strip for main finger block.....
	2432270	ALL	1	Insulation between main finger block cables and frame.....
	174827	"	5	Screw fastening insulation to finger block (No. 8, $\frac{1}{2}$ in. f.h. sherardized).....
	1437839	"	1	Cable cleat for main finger block cables.....
	19628	"	2	Screw fastening cable cleat to finger block (No. 10, $1\frac{1}{2}$ in. r.h. blued).....
	112094	LR, S2, FF, GG, GR2, HH, LL	1	REVERSE FINGER BLOCK with finger bases, without fingers.....
	16X680	DD, EE	1	REVERSE FINGER BLOCK with finger bases, without fingers.....
49	112095	ALL	1	Finger block.....
50	112096	LR, S2, FF, GG, GR2, HH, LL	7	†Finger base for 1st, 3rd, 5th, 7th, 9th, 11th or 15th finger.....
	112096	DD, EE	6	†Finger base for 1st, 3rd, 7th, 9th, 11th or 15th finger....
51	112097	LR, S2, FF, GG, GR2, HH, LL	7	†Finger base for 2nd, 6th, 8th, 10th, 12th, 14th or 16th finger.....
	112097	DD, EE	6	†Finger base for 2nd, 6th, 8th, 10th, 14th or 16th finger..
52	112098	LR, S2, FF, GG, GR2, HH, LL	1	†Finger base with copper terminal, for 4th finger.....
	194773	DD, EE	2	†Finger base with copper terminal, for 4th or 12th finger..
	112099	LR, S2, FF, GG, GR2, HH, LL	1	†Finger base for 13th finger.....
	112099	DD, EE	2	†Finger base for 5th or 13th finger.....
53	112088	LR, S2, FF, GG, GR2, HH, LL	14	Terminal clamp for No. 112096 or 112097.....
	112088	DD, EE	12	Terminal clamp for No. 112096 or 112097.....
54	112101	LR, S2, FF, GG, GR2, HH, LL	1	Terminal clamp for No. 112099.....
	112101	DD, EE	2	Terminal clamp for No. 112099.....
55	17366	ALL	15	Clamping screw for No. 112088 or 112101 ($\frac{1}{8}$ in.—18, $\frac{3}{8}$ in. hex. h. slot. sherardized cap screw).....
	112102	"	1	Copper terminal for No. 112098.....
	127349	"	32	Screw fastening finger base to block (No. 10, 1 in. f.h. sherardized).....
56	465525	"	16	REVERSE CONTACT FINGER.....
57	30522	"	16	Cap screw fastening reverse contact finger to base ($\frac{1}{8}$ in.—18, $\frac{1}{2}$ in. hex. h. slot. sherardized).....
	498560	"	16	Washer for No. 30522 ($\frac{3}{4}$ in. by $\frac{5}{8}$ in. by 0.0625 in. sherardized).....
	154196	"	16	Spring lock washer for No. 30522 ($\frac{3}{4}$ in. by $\frac{3}{4}$ in. by $\frac{1}{4}$ in. thick).....
	112103	"	1	Connection strip for two fingers.....
	129856	"	6	Screw fastening finger block to frame (14—24, 2 in. r.h. sherardized).....
	143974	"	6	Washer for No. 129856 ($\frac{3}{4}$ in. by $\frac{1}{2}$ in. by 0.0625 in. sherardized).....
	143804	LR, S2, DD, EE, GG, GR2, HH, LL	1	Ground terminal for main and reverse finger block cables..
	151112	"	1	Ground terminal for frame.....

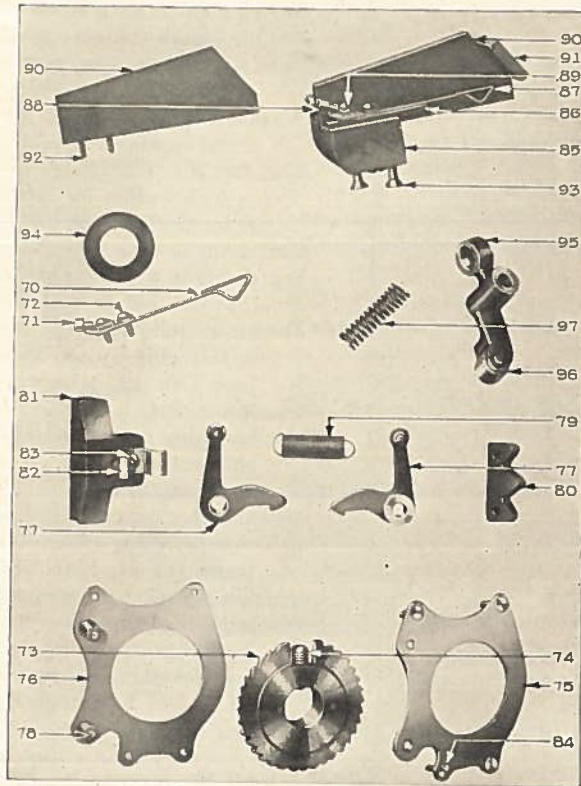
* In these descriptions each base is located by counting the fingers from the top of the finger block.

Parts of Type K-35 Controllers GEF-1309

Ref. No.	Cat. No.	Form	No. Required	Description
	151106	LR, S2 DD, EE, GG, GR2, HH, LL	1	Terminal bushing for No. 151112.....
58	112089	"	1	Clamp for No. 151106.....
59	144048	"	2	Clamping screw for No. 112089 ($\frac{1}{8}$ in.-18, $1\frac{1}{2}$ in. hex. h. slot. sherardized cap screw).....
	154196	"	2	Spring lock washer for No. 144048 ($\frac{3}{4}$ in. by $\frac{3}{4}$ in. by $\frac{1}{4}$ in. thick).....
	1459207	FF	1	Ground terminal for reverse finger block.....
	256792	ALL	1	MOTOR CUTOOUT SWITCH with insulated wires.....
60	112107	"	1	Wooden base.....
	256793	"	3	Switch contact with terminal support and terminal.....
	112110	"	1	Switch contact with ground connection.....
	112111	"	1	Double switch contact.....
	126872	"	3	Cap screw fastening terminal to support ($\frac{1}{8}$ in.-18, $\frac{5}{8}$ in. hex. h. slot. sherardized).....
	498560	"	3	Washer for No. 126872 ($\frac{3}{4}$ in. by $\frac{5}{8}$ in. by 0.0625 in. sherardized).....
	1480733	"	3	Nut for No. 126872 ($\frac{1}{8}$ in.-18, hex. st'd, sherardized)
	154196	"	3	Spring lock washer for No. 1480733 ($\frac{3}{4}$ in. by $\frac{3}{4}$ in. by $\frac{1}{4}$ in. thick).....
61	1498354	"	1	Switch blade with fulcrum, upper.....
	1498353	"	1	Switch blade with fulcrum, middle or lower.....
	33827	"	1	Single switch handle with fiber collar.....
62	112116	"	1	Double switch handle.....
	39546	"	19	Screw fastening switch contact or fulcrum to wooden base (No. 10, $\frac{3}{4}$ in. r.h. blued).....
	16D98	"	1	Insulation plate for connection board cables.....
	126912	"	1	Screw fastening cutout switch to frame (14-24, $\frac{3}{4}$ in. r. h. sherardized).....
	154194	"	1	Spring lock washer for No. 126912 ($\frac{3}{4}$ in. by $\frac{3}{4}$ in. by $\frac{1}{4}$ in. thick).....
63	17373	"	2	Cap screw fastening ground connection for No. 112110 to frame (14-24, $\frac{1}{2}$ in. hex. h. slot, brass).....
	1454000	"	1	Supporting bracket for connection board.....
	127349	"	2	Screw fastening supporting bracket to wooden base (No. 10, 1 in. f. h. sherardized).....
	126905	"	1	Cap screw fastening supporting bracket to frame (14-24, $\frac{5}{8}$ in. hex. h. slot. sherardized).....
	12D492	"	1	Insulation plate between cutout switch and main cylinder
	1437840	"	1	Cable cleat for cutout switch cables.....
	151663	"	2	Screw for No. 1437840 (14-24, $1\frac{3}{4}$ in. r. h. sherardized)....
	143974	"	2	Washer for No. 151663 ($\frac{3}{4}$ in. by $\frac{1}{2}$ in. by 0.0625 in. sherardized).....
64	218405	"	1	Series stop lever with fiber shoe.....
65	218406	"	1	Fiber shoe for series stop lever.....
	175742	"	2	Screw fastening shoe to lever (8-36, $\frac{1}{2}$ in. f.h. sherardized)
	112121	"	1	Pivot pin for series stop lever (threaded $\frac{1}{8}$ in.-14).....
	30524	"	1	Nut for No. 112121 ($\frac{1}{8}$ in.-14, $\frac{1}{4}$ in. thick, $\frac{3}{8}$ in. across flats, hex. cham. one side).....
	161261	"	1	Washer for No. 112121 ($\frac{3}{8}$ in. by $\frac{1}{8}$ in. by 0.0625 in. sherardized).....
	110774	"	1	Spring cotter for No. 112121 ($\frac{3}{8}$ in. by $\frac{5}{8}$ in. sherardized)...
	112122	"	1	Tension spring for series stop lever.....
	445398	"	1	Spring post for tension spring (threaded 14-24).....
	17789	"	2	Dowel for controller frame, with nut.....
	1480738	"	2	Nut for No. 17789 ($\frac{1}{2}$ in.-13, hex. st'd, sherardized).....

GEF-1309 Parts of Type K-35 Controllers

Ref. No.	Cat. No.	Form	No. Required	Description
	221257	LR, S2, DD, FF, GG, GR2, HH, LL	1	Set of parts necessary to equip controller for auxiliary line breaker operation.....
	1886855G4	EE	1	Set of parts necessary to equip controller for auxiliary line breaker operation.....
<i>Following are the parts:</i>				
	1400404	LR, S2, DD, FF, GG, GR2, HH, LL	1	Finger base.....
	153979	"	2	Screw fastening finger base to main finger block (No. 8, 3/4 in. f.h. sherardized).....



Ref. No.	Cat. No.	Form	No. Required	Description
70	1404009	LR, S2, DD, FF, GG, GR2, HH, LL	1	AUXILIARY CONTACT FINGER.....
71	417591	"	1	Copper terminal for contact finger.....
72	166096	"	2	Screw fastening contact finger to finger base (10-30, 3/8 in. r.h. sherardized).....
	150279	"	1	Washer for No. 166096 (1/16 in. by 1/16 in. by 0.044 in. sherardized).....
	154191	"	2	Spring lock washer for No. 166096 (1/16 in. by 1/16 in. by 0.0625 in.).....
	216827	ALL	1	RATCHET MECHANISM, consists of top and bottom plates, ratchet wheel, set screw, ratchet pawls, tension spring, copper contact, contact support and star wheel segment.....
73	206295	"	1	Ratchet wheel.....

Parts of Type K-35 Controllers GEF-1309

Ref. No.	Cat. No.	Form	No. Required	Description
74	199097	ALL	1	Set screw for ratchet wheel ($\frac{7}{16}$ in.-14, $1\frac{1}{32}$ in. headless, sp'l, sherardized).....
75	13D101	"	1	Top plate for ratchet wheel.....
76	1404073	"	1	Bottom plate for ratchet wheel.....
77	1468342	"	2	Pawl for ratchet wheel, with bushing and spring post...
78	1419753	"	2	Pivot pin for pawl.....
79	2410837	"	1	Tension spring for pawls.....
80	1469064	"	1	Star wheel segment.....
81	205083	"	1	Contact support with copper contact.....
82	1404078	"	1	Copper contact.....
83	166096	"	1	Screw fastening contact to support (10-30, $\frac{3}{8}$ in. r.h. sherardized).....
	154191	"	1	Spring lock washer for No. 166096 ($\frac{1}{4}$ in. by $\frac{3}{4}$ in. by 0.0625 in.).....
84	199096	"	4	Screw fastening star wheel segment, contact support, top and bottom plates together (10-30, $\frac{3}{4}$ in. f.h. sherardized).....
	224195	"	1	Finger block with finger bases, contact fingers, copper terminals, arcing plates and brace.....
	224196	"	1	Finger block with finger bases without fingers.....
85	1432646	"	1	Finger block.....
86	1404083	"	2	Finger base.....
	205086	"	4	Screw fastening finger base to finger block (8-36, $\frac{5}{8}$ in. f.h. sherardized).....
87	1404009	"	2	CONTACT FINGER.....
88	417591	"	2	Copper terminal.....
89	166096	"	4	Screw fastening contact finger to finger base (10-30, $\frac{3}{8}$ in. r.h. sherardized).....
	150279	"	2	Washer for No. 166096 ($\frac{1}{4}$ in. by $\frac{1}{2}$ in. by 0.044 in. sherardized).....
	154191	"	4	Spring lock washer for No. 166096 ($\frac{1}{4}$ in. by $\frac{3}{4}$ in. by 0.0625 in.).....
90	1432648	"	2	Arcing plate.....
91	1432645	"	1	Brace for arcing plate.....
92	224197	"	4	Screw fastening arcing plate to finger block (6-40, 1 in. r.h. sherardized).....
	205086	"	2	Screw fastening brace to arcing plate (8-36, $\frac{5}{8}$ in. f.h. sherardized).....
93	151719	"	2	Screw fastening finger block to bearing cap (14-24, $\frac{7}{8}$ in. f.h. sherardized).....
94	1487227	"	1	Spacing washer between ratchet switch and bearing cap...
95	224198	"	1	Check pawl with roller.....
96	204123	"	1	Roller with pin.....
	1487231	"	1	Pivot pin for check pawl.....
97	224199	"	1	Compression spring for check pawl.....
	161261	"	1	Washer for pivot pin ($\frac{1}{2}$ in. by $\frac{7}{8}$ in. by 0.0625 in. sherardized).....
	110774	"	1	Spring cotter for pivot pin ($\frac{3}{32}$ in. by $\frac{5}{8}$ in. sherardized).....

GENERAL ELECTRIC COMPANY

GEF-1309 Parts of Type K-35 Controllers

INDEX TO CATALOG NUMBERS

CAT. NO. PAGE	CAT. NO. PAGE	CAT. NO. PAGE	CAT. NO. PAGE	CAT. NO. PAGE
13632-6	112111-9	189130-2	442134-2	1493584-6
14410-1	112116-9	189499-1	444946-6	1493589-6
17366-8	112121-9	194773-8	445398-9	1495259-2
17373-9	112122-9	194951-6	463701-4	1495261-2
17376-7	112305-7	199096-11	465525-8	1495262-2
17789-9	121834-2	199097-4, 11	498560-7, 8, 9	1495264-2
19628-8	121840-6	204123-11	713327-7	1495265-2
19739-6	126872-7, 9	205083-11	713332-7	1498353-9
19892-2	126905-7, 9	205086-11	713333-7	1498354-9
30520-1	126912-9	206291-7	713336-7	1886842G4-2
30522-8	127065-1	206292-7	713353-7	1886842P15-4
30524-9	127347-7	206293-7	729413-7	1886842P24-4
33827-9	127349-8, 9	206295-10	821020P7-4	1886842P25-4
39546-9	129856-8	206302-4	1153397G6-1	1886853G4-10
66903-6	129913-6	206303-4	1153397G7-1	1972366G1-1
110081-1	133717-1	206304-7	1400404-7, 10	2190650P2-6
110082-2	141687-1	206305-4	1404009-7, 10, 11	2190650P13-6
110083-2	143510-2	206531-4	1404073-11	2190653G3-6
110084-2	143804-8	216827-10	1404078-11	2402352-1
110085-2	143974-1, 8, 9	218405-9	1404083-11	2410837-11
110774-2, 6, 9, 11	144048-9	218406-9	1405021-6	2412128-6
112024-1	145670-2	221257-10	1405080-7	2431526-4
112026-1	148915-8	224184-1	1407209-7	2432270-8
112029-1	150279-10, 11	224186-2	1419753-11	2440216-2
112033-2	150479-7	224187-2	1432627-2	2440217-2
112034-2	151104-6	224188-2	1432645-11	2440218-2
112035-2	151106-9	224195-11	1432646-11	2440219-2
112036-2	151107-7	224196-11	1432648-11	2440222-2
112052-4	151108-7	224197-11	1432649-6	2440223-2
112053-4	151109-7	224198-11	1432656-1	2440990-2
112060-6	151112-8	224199-11	1434927-1	2611028G3-1
112061-6	151123-4	234391-1	1434942-1	2617992G1-1
112062-6	151124-4	234392-2	1437839-8	2617992G2-1
112063-6	151183-4	234396-6	1437840-9	2670480G1-6
112064-6	151663-9	•245790-2	1452072-7	2670481G1-6
112070-6	151719-11	256786-1	1452079-7	11D688-7
112072-6	151848-1	256787-6	1452089-7	12D354-4
112074-6	153979-7, 10	256789-6	1452092-7	12D487-6
112075-6	153984-6	256790-7	1454000-9	12D492-9
112088-8	154191-10, 11	256792-9	1457614-4	12D900-7
112089-9	154194-7, 9	256793-9	1457627-4	13D101-11
112094-8	154196-7, 8, 9	259898-2	1459207-9	13D424-7
112095-8	161261-6, 9, 11	400037-2	1459208-8	16D98-9
112096-8	166096-10, 11	405786-2	1464827-2	16D347-4
112097-8	169302-4	406014-1	1468342-11	2X97-1
112098-8	171765-6	414842-7	1468360-1	2X257-1, 6
112099-8	171768-6	417591-7, 10, 11	1469064-11	16X667-6
112101-8	171784-2	422515-4	1480733-9	16X668-6
112102-8	174827-8	422681-4	1480738-9	16X679-2
112103-8	175561-7	432843-1	1485684-4	16X680-8
112107-9	175742-9	435385-4	1487227-11	
112110-9	180235-4	435529-1	1487231-11	